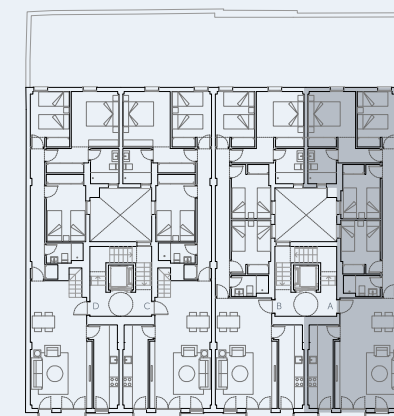
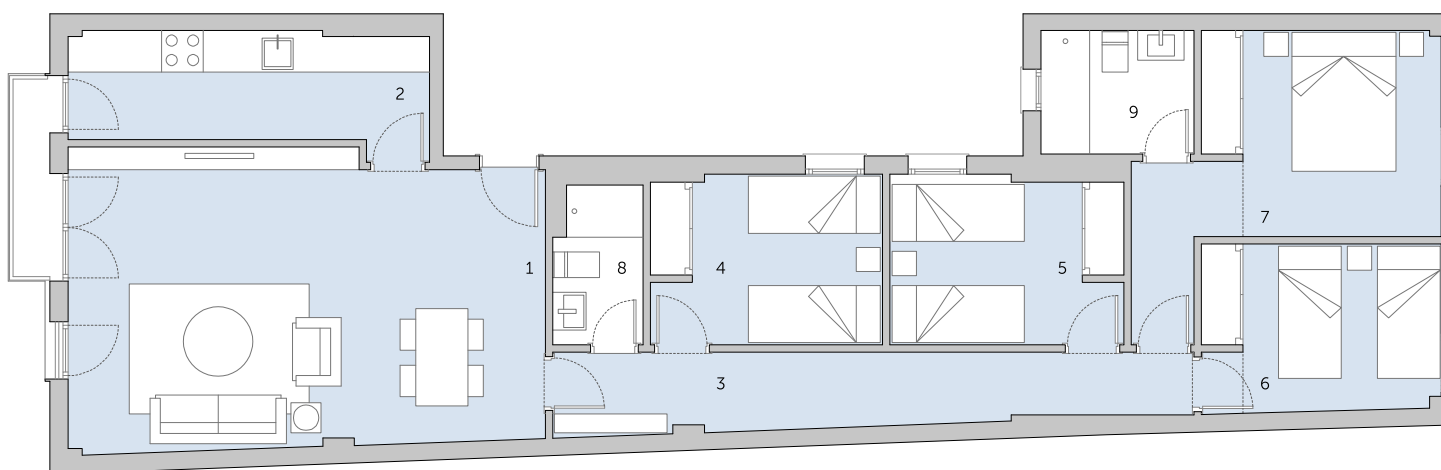
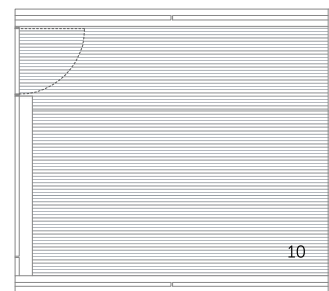


## VIVIENDA SEGUNDO A

### SUPERFICIES

1. SALÓN – COMEDOR	28.71 m <sup>2</sup>
2. COCINA	8.33 m <sup>2</sup>
3. PASILLO	6.67 m <sup>2</sup>
4. DORMITORIO 1	8.12 m <sup>2</sup>
5. DORMITORIO 2	8.10 m <sup>2</sup>
6. DORMITORIO 3	8.29 m <sup>2</sup>
7. DORMITORIO 4	12.71 m <sup>2</sup>
8. BAÑO 1	2.84 m <sup>2</sup>
9. BAÑO 2	3.92 m <sup>2</sup>
<b>SUPERFICIE ÚTIL</b>	<b>87.69 m<sup>2</sup></b>
10. TERRAZA EN CUBIERTA	15.28 m <sup>2</sup>
<b>TOTAL SUP. CONSTRUIDA</b>	<b>123.15 m<sup>2</sup></b>



PLANTA SEGUNDA