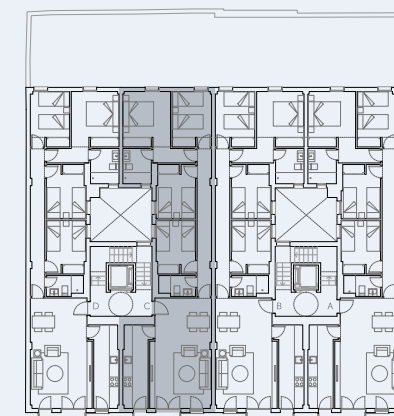
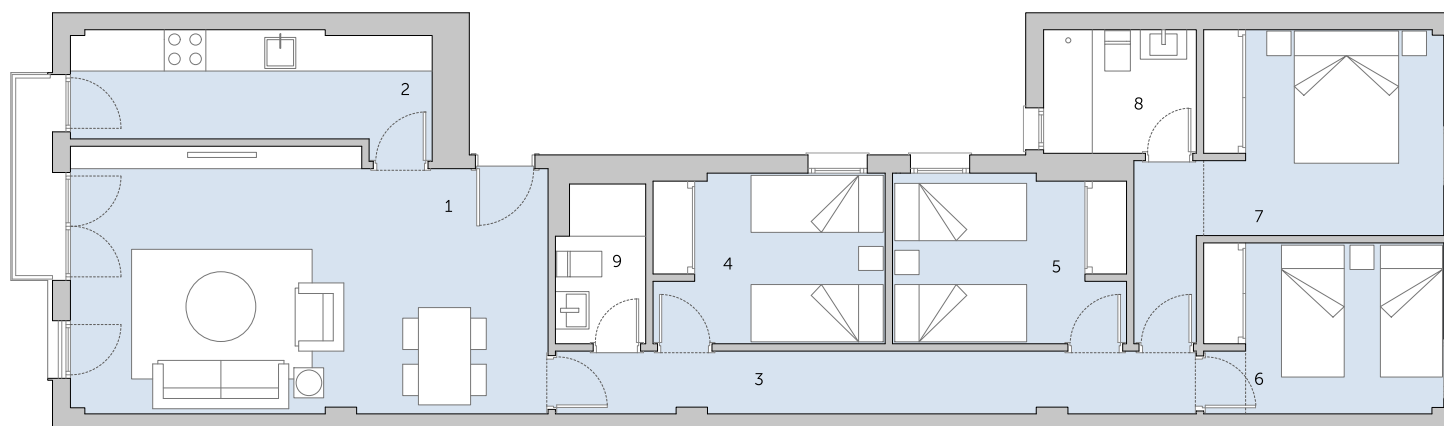
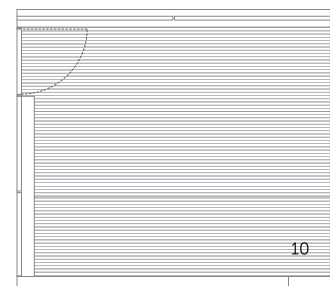


## VIVIENDA SEGUNDO C

### SUPERFICIES

1. SALÓN - COMEDOR	25.52 m <sup>2</sup>
2. COCINA	8.33 m <sup>2</sup>
3. PASILLO	8.22 m <sup>2</sup>
4. DORMITORIO 1	8.11 m <sup>2</sup>
5. DORMITORIO 2	8.13 m <sup>2</sup>
6. DORMITORIO 3	8.47 m <sup>2</sup>
7. DORMITORIO 4	12.71 m <sup>2</sup>
8. BAÑO 1	3.92 m <sup>2</sup>
9. BAÑO 2	2.84 m <sup>2</sup>
<b>SUPERFICIE ÚTIL</b>	<b>86.25 m<sup>2</sup></b>
10. TERRAZA	15.47 m <sup>2</sup>
<b>TOTAL SUP. CONSTRUIDA</b>	<b>112.21 m<sup>2</sup></b>



PLANTA SEGUNDA